



**DEEP CYCLE**  
**SERIES: 4000**  
**MODEL: S-600**

**BATTERY ENGINEERING**  
**WWW.ROLLSBATTERY.COM MADE IN CANADA**

**BATTERY TYPE: 6 VOLTS**

**DIMENSIONS:**

|               |        |               |
|---------------|--------|---------------|
| <b>LENGTH</b> | 318 MM | 12 1/2 INCHES |
| <b>WIDTH</b>  | 181 MM | 7 1/8 INCHES  |
| <b>HEIGHT</b> | 425 MM | 16 3/4 INCHES |

**WEIGHTS:**

|                   |       |          |
|-------------------|-------|----------|
| <b>WEIGHT DRY</b> | 44 KG | 97 LBS.  |
| <b>WEIGHT WET</b> | 55 KG | 122 LBS. |

**CONTAINER CONSTRUCTION:**

**CONTAINER:** HIGH DENSITY POLYPROPYLENE  
**COVER:** HIGH DENSITY POLYPROPYLENE

**TERMINALS:** FLAG TERMINAL  
**HANDLES:** ROPE

**PLATES:**

**POSITIVE PLATE DIMENSION:**

|                  |         |               |
|------------------|---------|---------------|
| <b>HEIGHT</b>    | 273 MM  | 10.750 INCHES |
| <b>WIDTH</b>     | 143 MM  | 5.625 INCHES  |
| <b>THICKNESS</b> | 4.32 MM | 0.170 INCHES  |

**CELLS:** 3  
**PLATES/CELL:** 19

**NEGATIVE PLATE DIMENSION:**

|                  |         |               |
|------------------|---------|---------------|
| <b>HEIGHT</b>    | 273 MM  | 10.750 INCHES |
| <b>WIDTH</b>     | 143 MM  | 5.625 INCHES  |
| <b>THICKNESS</b> | 3.05 MM | 0.120 INCHES  |

**SEPARATOR THICKNESS:** 2 MM 0.061 INCHES  
**INSULATION GLASS MAT:** 1 MM 0.020 INCHES

**CAPACITY:**

**CRANK AMPS:**  
**COLD (CCA)** 0°F / -17.8°C 1370  
**MARINE (MCA)** 32°F / 0°C 1713

**ELECTROLYTE RESERVE:**  
**ABOVE PLATES** 57 MM 2.25 INCHES  
**RESERVE CAPACITY:**  
**RC @ 25A** 979 MINUTES

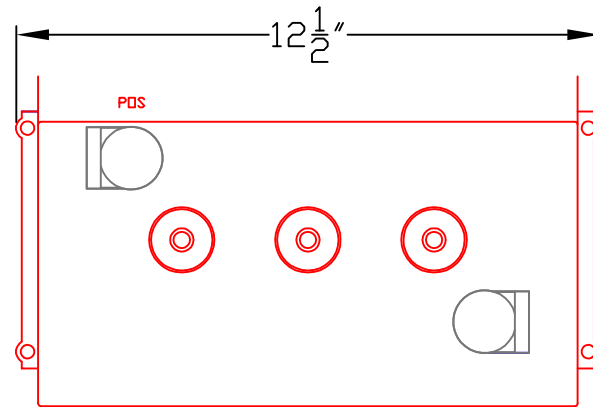
**20 HR RATE: 450**

|                   | <b>HOUR RATE</b>    | <b>SPECIFIC GRAVITY</b> | <b>CAP / AH</b> | <b>CURRENT / AMPS</b> |
|-------------------|---------------------|-------------------------|-----------------|-----------------------|
| CAPACITY @        | 100 HOUR RATE       | 1.280 SP. GR.           | 599             | 5.99                  |
| CAPACITY @        | 72 HOUR RATE        | 1.280 SP. GR.           | 567             | 7.88                  |
| CAPACITY @        | 50 HOUR RATE        | 1.280 SP. GR.           | 536             | 10.71                 |
| CAPACITY @        | 24 HOUR RATE        | 1.280 SP. GR.           | 464             | 19.3                  |
| <b>CAPACITY @</b> | <b>20 HOUR RATE</b> | <b>1.280 SP. GR.</b>    | <b>450</b>      | <b>22.5</b>           |
| CAPACITY @        | 15 HOUR RATE        | 1.280 SP. GR.           | 423             | 28.2                  |
| CAPACITY @        | 12 HOUR RATE        | 1.280 SP. GR.           | 401             | 33.4                  |
| CAPACITY @        | 10 HOUR RATE        | 1.280 SP. GR.           | 383             | 38.3                  |
| CAPACITY @        | 8 HOUR RATE         | 1.280 SP. GR.           | 360             | 45.0                  |
| CAPACITY @        | 6 HOUR RATE         | 1.280 SP. GR.           | 333             | 55.5                  |
| CAPACITY @        | 5 HOUR RATE         | 1.280 SP. GR.           | 315             | 63                    |
| CAPACITY @        | 4 HOUR RATE         | 1.280 SP. GR.           | 293             | 73                    |
| CAPACITY @        | 3 HOUR RATE         | 1.280 SP. GR.           | 266             | 89                    |
| CAPACITY @        | 2 HOUR RATE         | 1.280 SP. GR.           | 230             | 115                   |
| CAPACITY @        | 1 HOUR RATE         | 1.280 SP. GR.           | 162             | 162                   |



I STATION RD SPRINGHILL, NOVA SCOTIA CANADA B0M 1X0 1.800.681.9914

REV.2  
 Apr-10  
 S-600



PART NUMBER: S600

WEIGHT WET: 122 LB / 55 KG

WEIGHT DRY: 97 LB / 44 KG

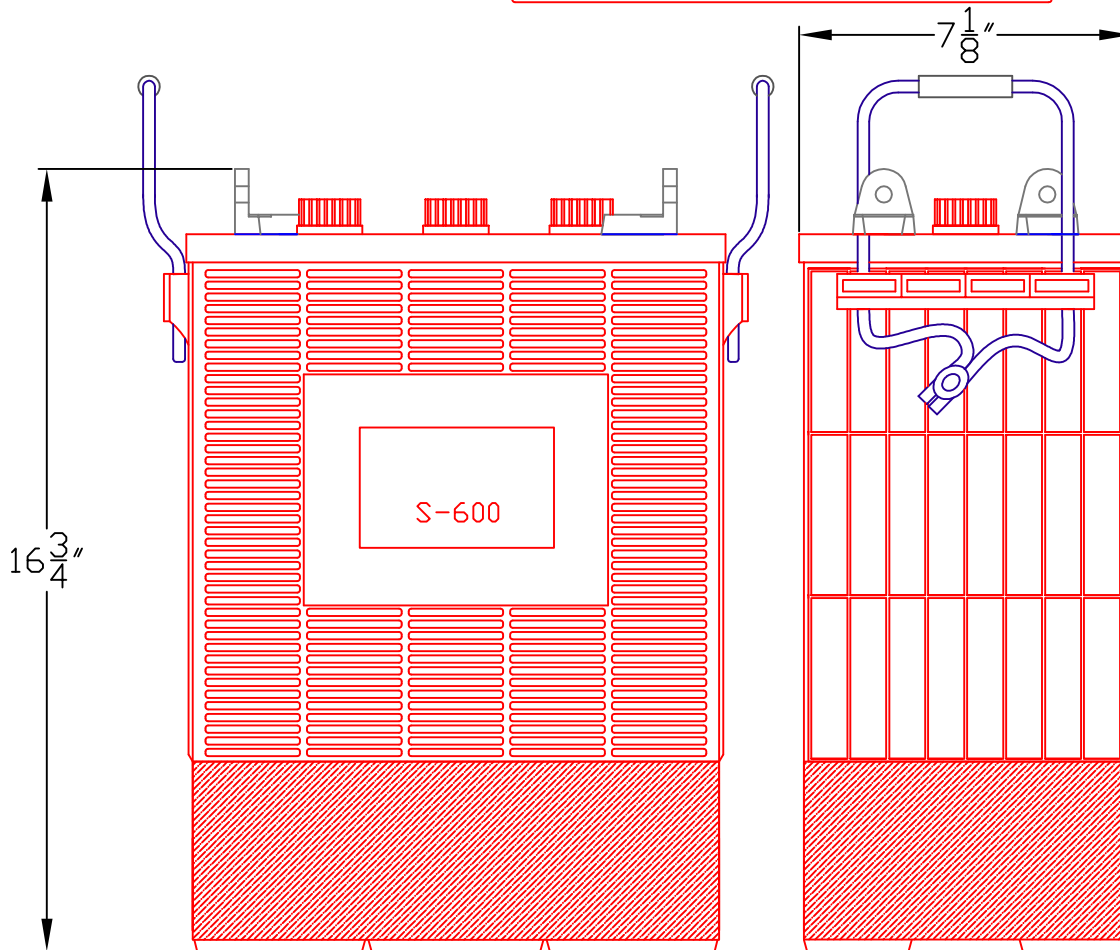
CAPACITY 450 AH 20HR RATE

VOLTAGE: 6 V

OVERALL DIMENSIONS: 12 1/2" X 7 1/8" X 16 3/4"



MAX HEIGHT WITH OPTIONAL HYDROCAPS 17.41"



|                                 |                                       |
|---------------------------------|---------------------------------------|
| TITLE:                          |                                       |
| S600 SOLAR                      |                                       |
| DESCRIPTION:                    |                                       |
| 6V DEEP CYCLE SOLAR SERIES 4000 |                                       |
| CONTACT INFO:                   |                                       |
| WEB:                            | WWW.SURRETTE.COM                      |
| E-MAIL:                         | SALES@SURRETTE.COM                    |
| PHONE:                          | 1-800-681-9914                        |
| SCALE:                          | 1" = 4" 8.5" X 11" JPEG: NOT TO SCALE |
| Drawn by:                       | Approved By:                          |
| P. FERRON                       | JD SURRETTE                           |
| DATE: JAN-2010                  | REVISION 2                            |
| DRAWING NO.:                    | S600.dwg                              |