



**DEEP CYCLE**  
**SERIES: 5000**  
**MODEL: 8 NS 23 P**

**BATTERY ENGINEERING**  
**WWW.ROLLSBATTERY.COM MADE IN CANADA**

**BATTERY TYPE: 8 VOLTS**

**DIMENSIONS:**

<b>LENGTH</b>	718 MM	28 1/4 INCHES
<b>WIDTH</b>	210 MM	8 1/4 INCHES
<b>HEIGHT</b>	464 MM	18 1/4 INCHES

**WEIGHTS:**

<b>WEIGHT DRY</b>	80 KG	176 LBS.
<b>WEIGHT WET</b>	110 KG	242 LBS.

**CONTAINER CONSTRUCTION:**

<b>CONTAINER: (INNER)</b>	POLYPROPYLENE	<b>TERMINALS:</b>	FLAG WITH STAINLESS STEEL NUTS AND BOLTS
<b>COVER: (INNER)</b>	POLYPROPYLENE - HEAT SEALED TO INNER CONTAINER	<b>HANDLES:</b>	MOLDED
<b>CONTAINER: (OUTER)</b>	HIGH DENSITY POLYETHYLENE		
<b>COVER: (OUTER)</b>	HIGH DENSITY POLYETHYLENE SNAP FIT TO OUTER CONTAINER		

**PLATES:**

**POSITIVE PLATE DIMENSION:**

<b>HEIGHT</b>	222 MM	8.750 INCHES
<b>WIDTH</b>	143 MM	5.625 INCHES
<b>THICKNESS</b>	3.81 MM	0.150 INCHES

**CELLS:** 4      **PLATES/CELL:** 23

**NEGATIVE PLATE DIMENSION:**

<b>HEIGHT</b>	222 MM	8.750 INCHES
<b>WIDTH</b>	143 MM	5.625 INCHES
<b>THICKNESS</b>	3.05 MM	0.120 INCHES

**SEPARATOR: THICKNESS** 3 MM 0.105 INCHES

**INSULATION: GLASS MAT** 1 MM 0.020 INCHES

**CAPACITY:**

<b>CRANK AMPS:</b>		
<b>COLD (CCA)</b>	0°F / -17.8°C	1520
<b>MARINE (MCA)</b>	32°F / 0°C	1900

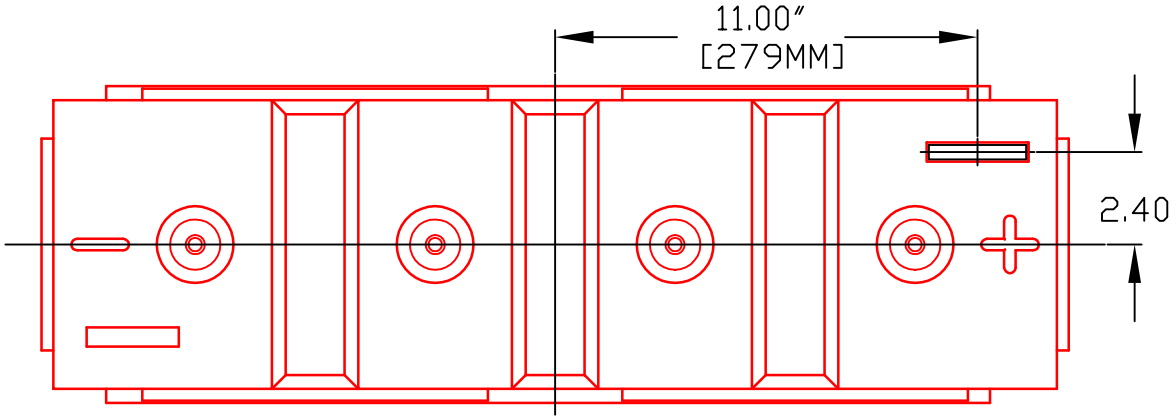
**ELECTROLYTE RESERVE: ABOVE PLATES** 143 MM 5.63 INCHES

**RESERVE CAPACITY: RC @ 25A** 716 MINUTES

**20 HR RATE: 450 50% DOD**

	<b>20 HOUR RATE</b>	<b>SPECIFIC GRAVITY</b>	<b>CAP / AH</b>	<b>CURRENT / AMPS</b>
CAPACITY @	100 HOUR RATE	1.280 SP. GR.	635	6.35
CAPACITY @	72 HOUR RATE	1.280 SP. GR.	599	8.31
CAPACITY @	50 HOUR RATE	1.280 SP. GR.	554	11.07
CAPACITY @	24 HOUR RATE	1.280 SP. GR.	468	19.5
<b>CAPACITY @</b>	<b>20 HOUR RATE</b>	<b>1.280 SP. GR.</b>	<b>450</b>	<b>22.5</b>
CAPACITY @	15 HOUR RATE	1.280 SP. GR.	419	27.9
CAPACITY @	12 HOUR RATE	1.280 SP. GR.	392	32.6
CAPACITY @	10 HOUR RATE	1.280 SP. GR.	374	37.4
CAPACITY @	8 HOUR RATE	1.280 SP. GR.	351	43.9
CAPACITY @	6 HOUR RATE	1.280 SP. GR.	320	53.3
CAPACITY @	5 HOUR RATE	1.280 SP. GR.	302	60
CAPACITY @	4 HOUR RATE	1.280 SP. GR.	279	70
CAPACITY @	3 HOUR RATE	1.280 SP. GR.	252	84
CAPACITY @	2 HOUR RATE	1.280 SP. GR.	216	108
CAPACITY @	1 HOUR RATE	1.280 SP. GR.	153	153





PART NUMBER: 8-NS-23P

WEIGHT WET: 242 LB / 110 KG

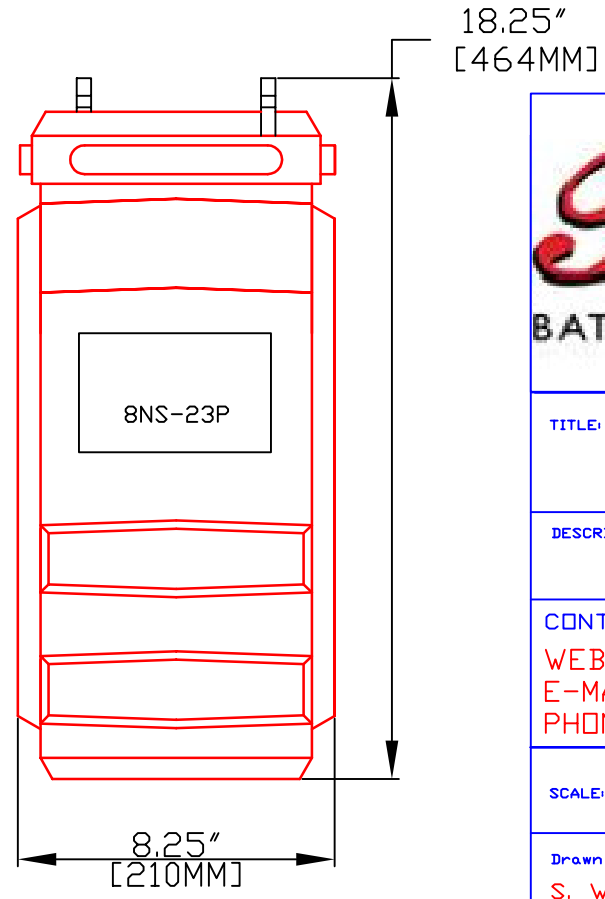
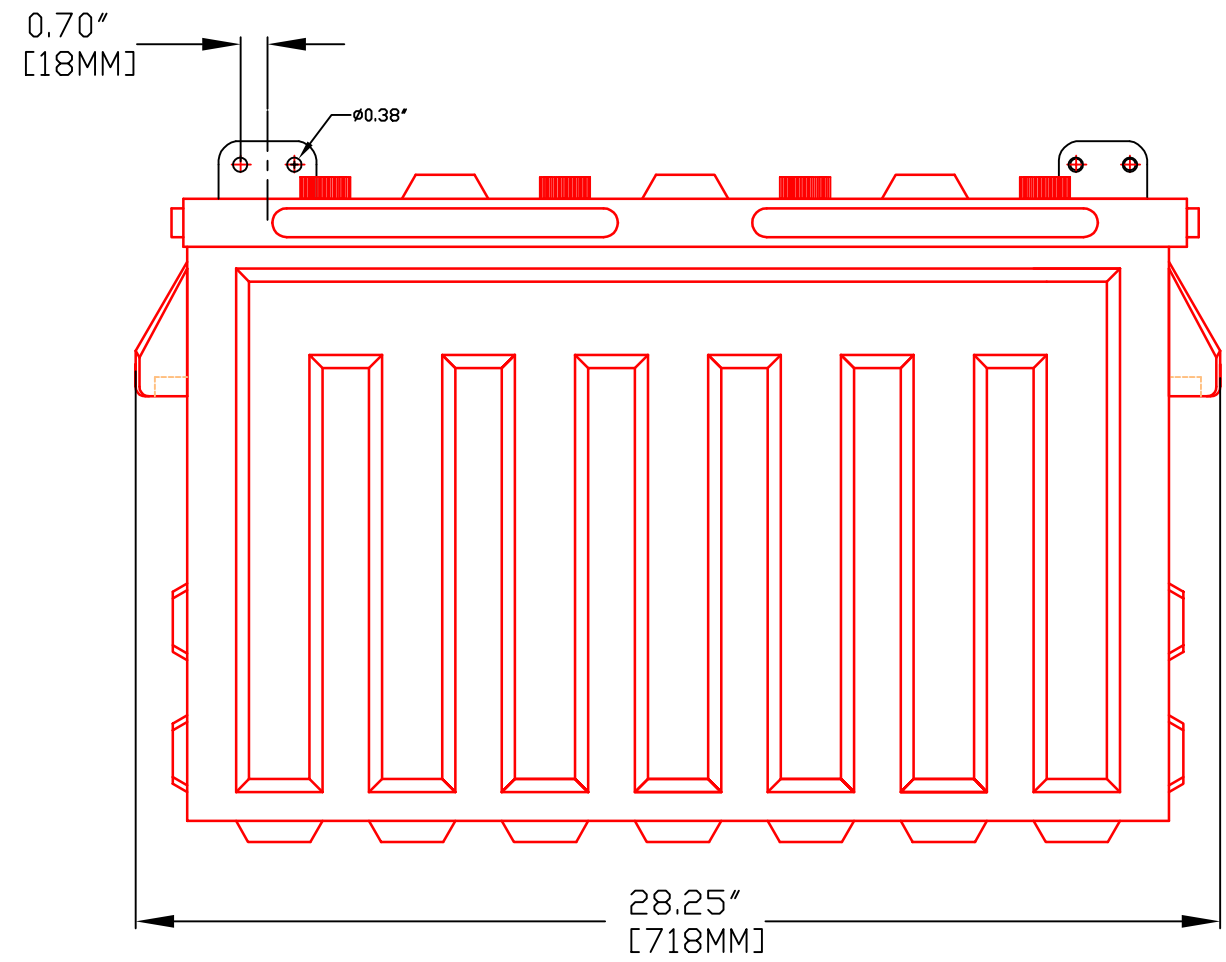
WEIGHT DRY: 176 LB / 80 KG

CAPACITY: 430 A 20 HOUR

VOLTAGE: 8 V

OVERALL DIMENSIONS: 28 1/4" X 8 1/4" X 18 1/4"

 MAX HEIGHT WITH OPTIONAL HYDROCAPS: 18.63" / 473 MM



TITLE:	8NS23P	
DESCRIPTION:	8V 5000 SERIES	
CONTACT INFO:	WEB: WWW.SURRETTE.COM E-MAIL: SALES@SURRETTE.COM PHONE: 1-800-681-9914	
SCALE:	1" = 6" 8.5" X 11"	1" = 4" 11" X 17" <small>JPEG</small> NOT TO SCALE
Drawn by:	S. WILES	Approved By: D. SURRETTE
DATE:	JAN-2010	REVISION 2.0
DRAWING NO.:	DWG 013, BD8NS23P	