



DEEP CYCLE
SERIES: 5000
MODEL: 8 CS 25P

BATTERY ENGINEERING
WWW.ROLLSBATTERY.COM MADE IN CANADA

BATTERY TYPE: 8 VOLTS

DIMENSIONS:

LENGTH	718 MM	28 1/4 INCHES
WIDTH	286 MM	11 1/4 INCHES
HEIGHT	464 MM	18 1/4 INCHES

WEIGHTS:

WEIGHT DRY	155 KG	342 LBS.
WEIGHT WET	192 KG	424 LBS.

CONTAINER CONSTRUCTION:

CONTAINER: (INNER)	POLYPROPYLENE	TERMINALS:	FLAG WITH STAINLESS STEEL NUTS AND BOLTS
COVER: (INNER)	POLYPROPYLENE - HEAT SEALED TO INNER CONTAINER	HANDLES:	MOLDED
CONTAINER: (OUTER)	HIGH DENSITY POLYETHYLENE		
COVER: (OUTER)	HIGH DENSITY POLYETHYLENE SNAP FIT TO OUTER CONTAINER		

PLATES:

POSITIVE PLATE DIMENSION:

HEIGHT	273 MM	10.750 INCHES
WIDTH	143 MM	5.625 INCHES
THICKNESS	6.60 MM	0.260 INCHES

NEGATIVE PLATE DIMENSION:

HEIGHT	273 MM	10.750 INCHES
WIDTH	143 MM	5.625 INCHES
THICKNESS	4.57 MM	0.180 INCHES

CELLS: 4 **PLATES/CELL:** 25

POSITIVE PLATE ENVELOPED BY VERTICAL SLYVER GLASS MAT

SEPARATOR:
THICKNESS 3 MM 0.105 INCHES

INSULATION:
GLASS MAT 1 MM 0.020 INCHES

CAPACITY:

CRANK AMPS:

COLD (CCA)	0°F / -17.8°C	2184
MARINE (MCA)	32°F / 0°C	2610

ELECTROLYTE RESERVE:
ABOVE PLATES 95 MM 3.75 INCHES

RESERVE CAPACITY:
RC @ 25A 1624 MINUTES

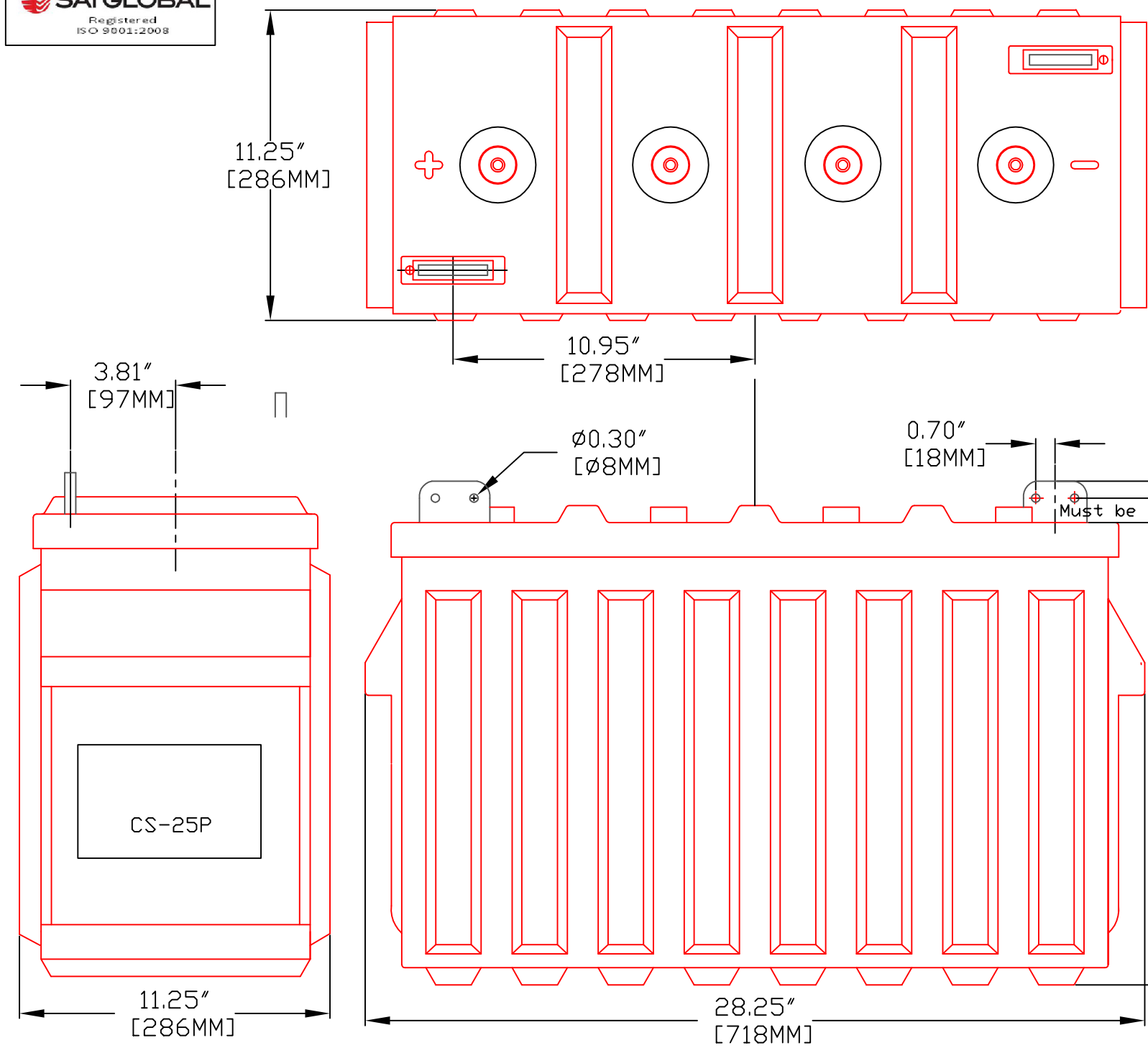
20 HR RATE: 820 50% DOD

	HOUR RATE	SPECIFIC GRAVITY	CAP / AH	CURRENT / AMPS
CAPACITY @	100 HOUR RATE	1.280 SP. GR.	1156	11.56
CAPACITY @	72 HOUR RATE	1.280 SP. GR.	1091	15.15
CAPACITY @	50 HOUR RATE	1.280 SP. GR.	1009	20.17
CAPACITY @	24 HOUR RATE	1.280 SP. GR.	853	35.5
CAPACITY @	20 HOUR RATE	1.280 SP. GR.	820	41.0
CAPACITY @	15 HOUR RATE	1.280 SP. GR.	763	50.8
CAPACITY @	12 HOUR RATE	1.280 SP. GR.	713	59.5
CAPACITY @	10 HOUR RATE	1.280 SP. GR.	681	68.1
CAPACITY @	8 HOUR RATE	1.280 SP. GR.	640	80.0
CAPACITY @	6 HOUR RATE	1.280 SP. GR.	582	97.0
CAPACITY @	5 HOUR RATE	1.280 SP. GR.	549	110
CAPACITY @	4 HOUR RATE	1.280 SP. GR.	508	127
CAPACITY @	3 HOUR RATE	1.280 SP. GR.	459	153
CAPACITY @	2 HOUR RATE	1.280 SP. GR.	394	197
CAPACITY @	1 HOUR RATE	1.280 SP. GR.	279	279

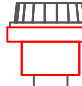


1 STATION RD SPRINGHILL, NOVA SCOTIA CANADA B0M 1X0 1.800.681.9914

REV.2
 Jan-10
 8 CS 25P



PART NUMBER: 8-CS-25P
 WEIGHT WET: 425 LB / 193 KG
 WEIGHT DRY: 342 LB / 155 KG
 CAPACITY: 820 AH 20 HR
 VOLTAGE: 8 V
 OVERALL DIMENSIONS: 28¼" X 11¼" X 18¼"

 MAX HEIGHT WITH OPTIONAL HYDROCAPS 18.63" / 473MM



TITLE:	8CS25P
DESCRIPTION:	8V / 4 CELL 25 PLATE (CS) DEEP CYCLE 5000 SERIES
CONTACT INFO:	WEB: WWW.SURRETTE.COM E-MAIL: SALES@SURRETTE.COM PHONE: 1-800-681-9914
SCALE:	1" = 6" 1" = 4" JPEG: 8.5" X 11" 11" X 17" NOT TO SCALE
Drawn by:	Approved By:
S. WILES	D. SURRETTE
DATE:	REVISION
JAN-2010	2.0
DRAWING NO.:	DWG 037, BD8CS25P